

Enafix Black RL

Exhaust Dyeing on bleached CO
Method : 60° C , Soda Ash

Application Suitability

Exhaust Dyeing	👍
Cold Pad Batch Dyeing	👎
Pad-Dry-Pad-Steam	👎
Pad-Dry-Steam	👎
Alkaline Dischargeability	👎

Keys

👍 = Strongly Recommended	👎 = Recommended
👎 = Partially Recommended	👎 = Not Recommended

Dyeing Properties

Fixation Temperature(Recommended)	60°C
Salt-free Neutral Water Solubility @ 60°C	100gpl
Solubility in Dyebath with 50 gpl Glauber's Salt	15gpl

Light Fastness

S/D	ISO-105-B02
1/6	4-5
1/3	4-5
1/1	5

Chlorinated Water Fastness

[20 ppm Active Chlorine]

Standard	Shade Change
ISO 105-E03	3

Washing Fastness

Standard	Shade Change	CO
ISO 105-C06-C2S, @60°C	4-5	4-5
ISO 105-C06-C2S, @60°C, 5X	4	4-5
AATCC TM 61-3A, @70°C	4	4-5

Water Fastness

Standard	Shade Change	CO
ISO 105-E01	4-5	4-5

Perspiration Fastness

Standard	Treatment	Shade Change	CO
ISO 105-E04	Alkaline	4	4-5
ISO 105-E04	Acidic	4	4-5

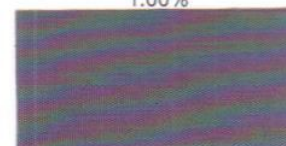
Rubbing Fastness

Standard	Dry	Wet
ISO 105-X12	4	4

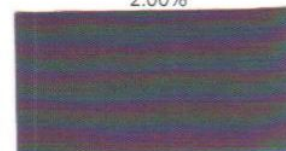
0.50%



1.00%



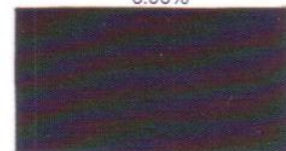
2.00%



4.00%



6.00%



8.00%

